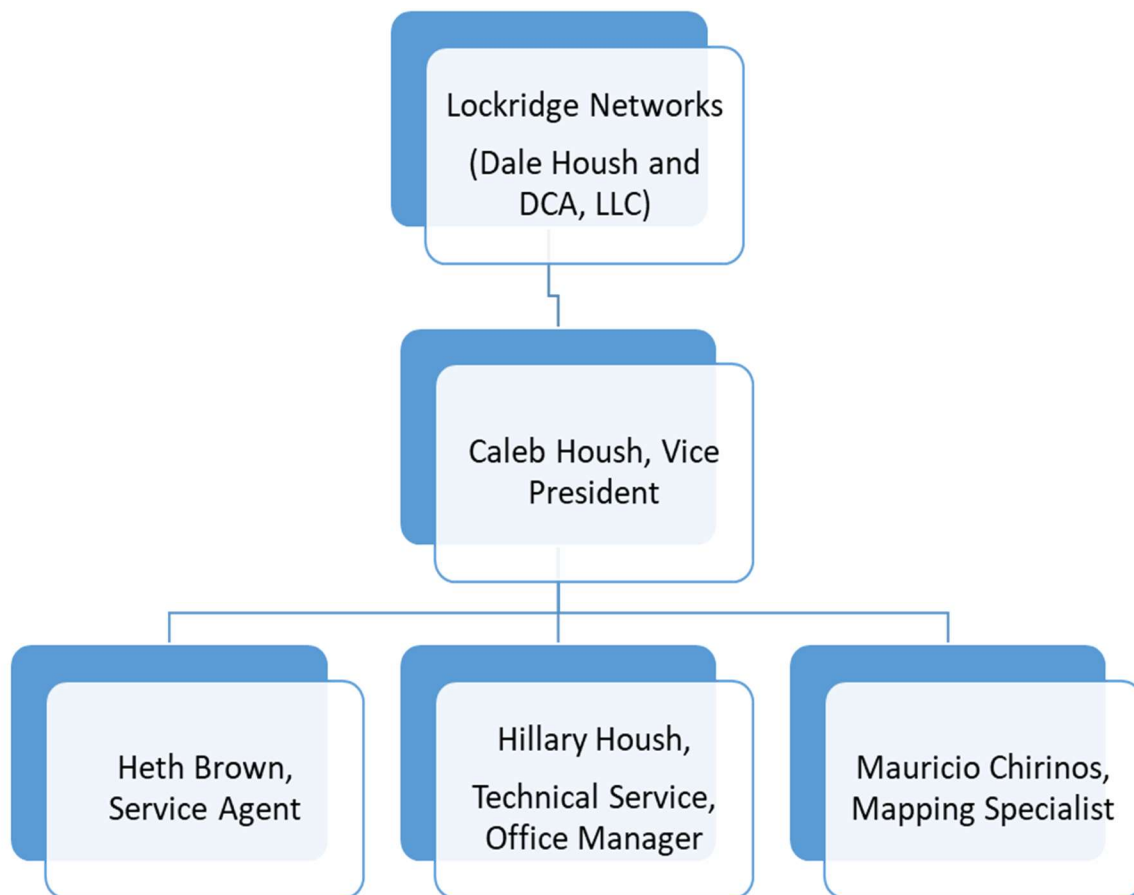


Lockridge Networks, LLC – Business Structure**ADDITIONAL INFORMATION (business structure, history, table of organization):**

HISTORY: Lockridge, Inc. is a family-owned building materials company with locations in four counties of southern Iowa and Northern Missouri. In 2016 the company was experiencing challenges with poor internet speed and service. Lockridge, Inc developed a solution to the problem by teaming up with an internet networking professional and establishing their own wireless network. This wireless network comprised of 6 initial towers to connect the four Lockridge Lumberyards stores to one another. This system allows for multiple business locations to have access to shared files and deliver more efficient customer service without outages. The broadband service slowly expanded to cover employees and eventually to a few residents (totaling 50) in the communities they serve. There were challenges to overcome with the trees and rolling hills common in southern Iowa, but those gaps in service have been taken care of. Word had also spread to Des Moines and got the attention of Governor Kim Reynolds and Lt. Governor Adam Gregg. They paid an onsite visit to the company in December 2018. The Governor and Lt Governor were encouraged by the efforts of Lockridge Networks and the contribution it can make to the 'Connect Every Iowan' Broadband Initiative.

Dale Housh and DCA, LLC partnered together to develop Lockridge Networks as a Limited Liability Corporation in 2017. This designation allowed co-business owner's liability protection that a corporation provides without the double taxation. The small business operates with five employees but foresees additional staff necessary in the near future.

Now in its third year of operation, word has spread throughout the area and there is now more demand than equipment available, with over 350 satisfied customers and service delivered over 40 towers.